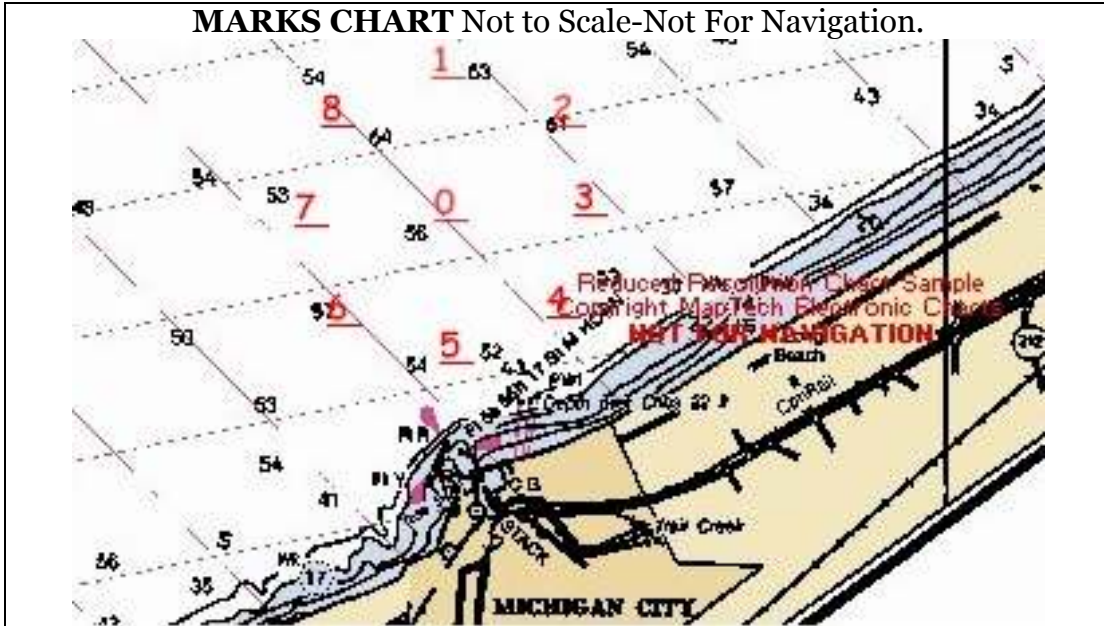


MCYC SAIL RACE-QUICK SHEET

MARKS CHART Not to Scale-Not For Navigation.



Mark Number	Latitude		Longitude	
	Degrees	Minutes	Degrees	Minutes
0	N 41	45.200	W 86	54.700
1	N 41	46.000	W 86	54.700
2	N 41	45.760	W 86	53.950
3	N 41	45.200	W 86	53.640
4	N 41	44.640	W 86	53.950
5	N 41	44.400	W 86	54.700
6	N 41	44.640	W 86	55.450
7	N 41	45.200	W 86	55.760
8	N 41	45.760	W 86	55.450

COMPASS HEADINGS BETWEEN MARKS

	0	1	2	3	4	5	6	7	8
0		360° (0.8 nm)	045° (0.8 nm)	090° (0.8 nm)	135° (0.8 nm)	180° (0.8 nm)	225° (0.8 nm)	270° (0.8 nm)	315° (0.8 nm)
1	180° (0.8 nm)		113° (0.6 nm)	135° (1.1 nm)	158° (1.5 nm)	180° (1.6 nm)	202° (1.5 nm)	225° (1.1 nm)	247° (0.6 nm)
2	225° (0.8 nm)	293° (0.6 nm)		158° (0.6 nm)	180° (1.1 nm)	202° (1.5 nm)	225° (1.6 nm)	247° (1.5 nm)	270° (1.1 nm)
3	270° (0.8 nm)	315° (1.1 nm)	338° (0.6 nm)		202° (0.6 nm)	225° (1.1 nm)	247° (1.5 nm)	270° (1.6 nm)	293° (1.5 nm)
4	315° (0.8 nm)	338° (1.5 nm)	360° (1.1 nm)	022° (0.6 nm)		247° (0.6 nm)	270° (1.1 nm)	293° (1.5 nm)	315° (1.6 nm)
5	360° (0.8 nm)	360° (1.6 nm)	022° (1.5 nm)	045° (1.1 nm)	067° (0.6 nm)		293° (0.6 nm)	315° (1.1 nm)	338° (1.5 nm)
6	045° (0.8 nm)	022° (1.5 nm)	045° (1.6 nm)	067° (1.5 nm)	090° (1.1 nm)	113° (0.6 nm)		338° (0.6 nm)	360° (1.1 nm)
7	090° (0.8 nm)	045° (1.1 nm)	067° (1.5 nm)	090° (1.6 nm)	113° (1.5 nm)	135° (1.1 nm)	158° (0.6 nm)		022° (0.6 nm)
8	135° (0.8 nm)	067° (0.6 nm)	090° (1.1 nm)	113° (1.5 nm)	135° (1.6 nm)	158° (1.5 nm)	180° (1.1 nm)	202° (0.6 nm)	

COURSE DESCRIPTIONS - 9 Marks course

Note (Port courses shown. Starboard courses are a mirror image of port courses)

	<p>Course: Port "A" Distance: 7.0 N miles</p>	<p>Course: Port "B" Distance: 5.4 N miles</p>	
	<p>Course: Port "C" Distance: 3.8 N miles</p>	<p>Course: Port "D" Distance: 3.2 N miles</p>	
	<p>Course: Port "E" Distance: 4.8 N miles</p>	<p>Course: Port "F" Distance: 8.0 N miles</p>	
	<p>Course: Port "G" Distance: 1.6 N miles</p>	<p>Course: Port "H" Distance: 2.2 N miles</p>	
	<p>Course: Port "I" Distance: 3.8 N miles</p>	<p>Course: Port "J" Distance: 2.7 N miles</p>	

ANNOUNCING THE COURSE (Example 2: D-1-Port-C-x2)

Part 1- The Pattern: A, B, C, D, E, F, G, H, I, or J

Part 2- The 1st Mark in the pattern: 1, 2, 3, 4, 5, 6, 7, or 8

Part 3- The turning direction: Port or Starboard

Part 4- Number of times the pattern is sailed (i.e. x1-sail the course once, x2-sail the course twice)