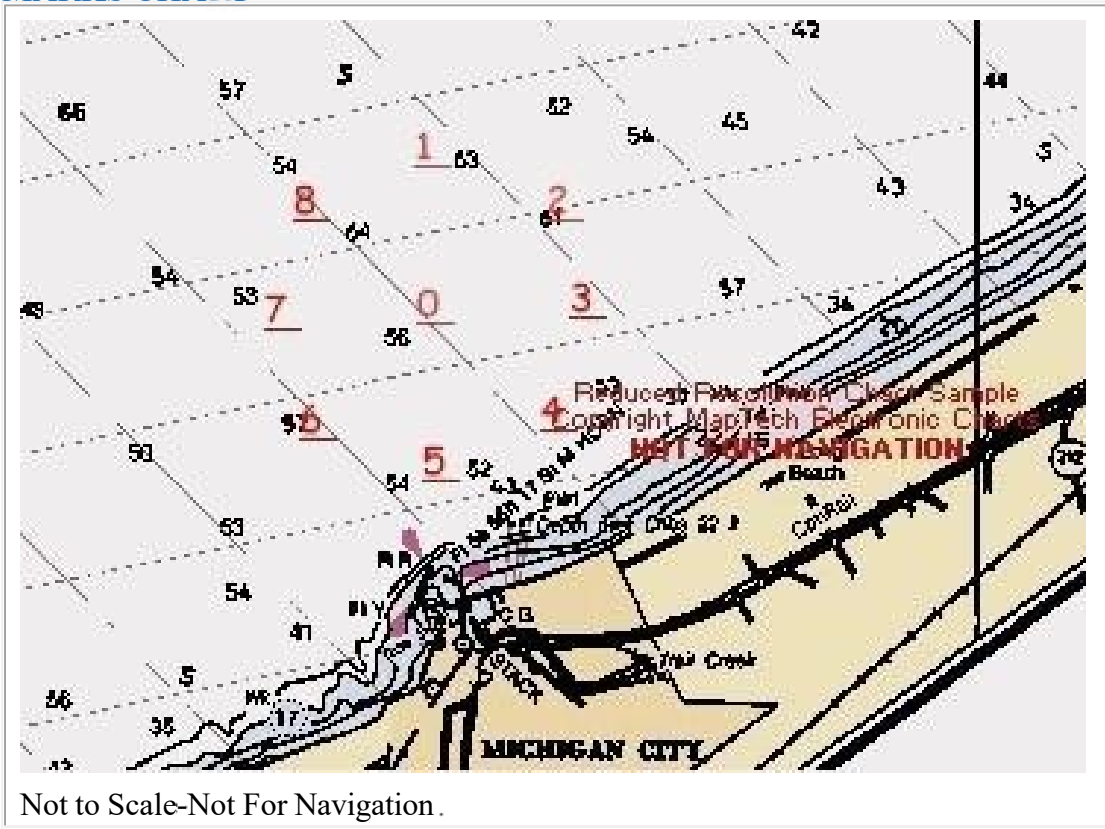
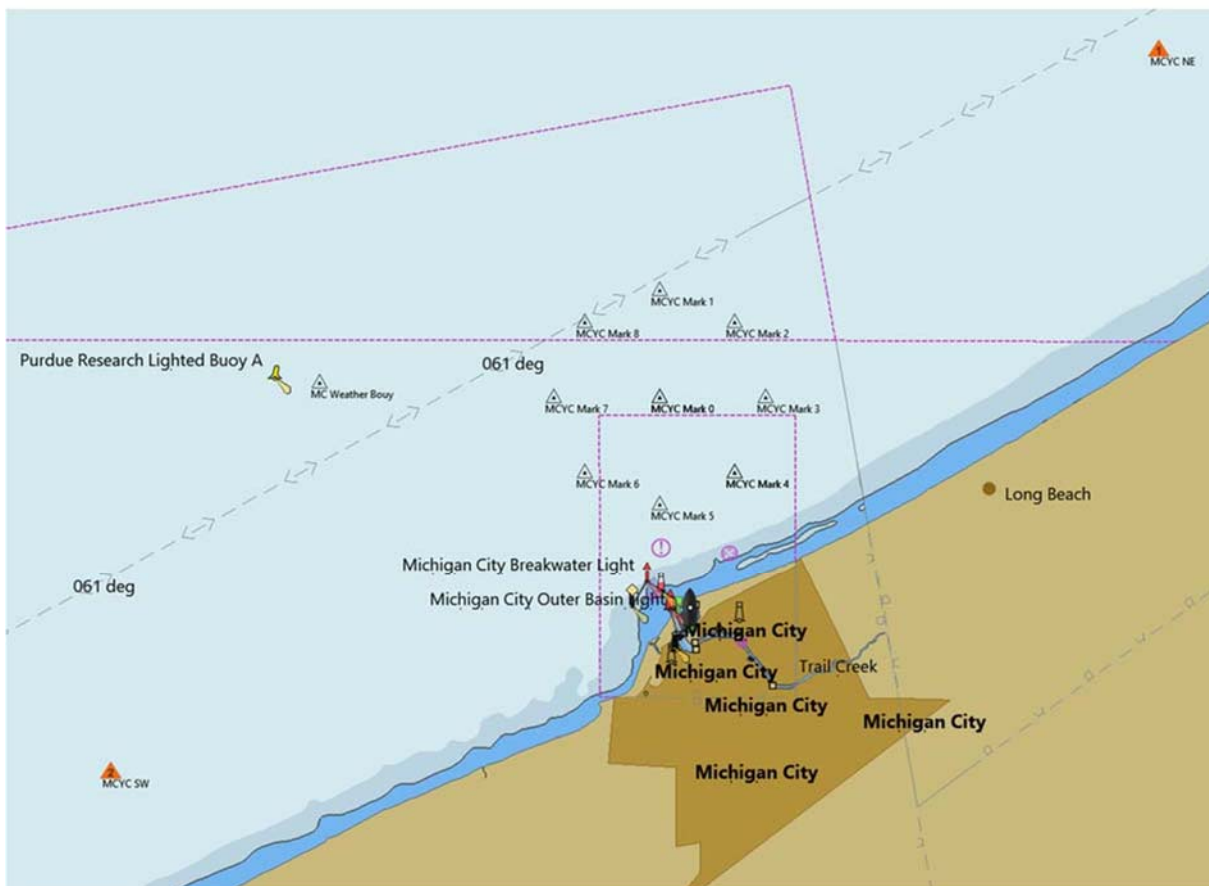


# MARKS CHART



Not to Scale-Not For Navigation.



MARK LOCATIONS

Mark #	Latitude		Longitude	
	Degrees	Minutes	Degrees	Minutes
0	N 41	45.200	W 86	54.700
1	N 41	46.000	W 86	54.700
2	N 41	45.760	W 86	53.950
3	N 41	45.200	W 86	53.640
4	N 41	44.640	W 86	53.950
5	N 41	44.400	W 86	54.700
6	N 41	44.640	W 86	55.450
7	N 41	45.200	W 86	55.760
8	N 41	45.760	W 86	55.450
NE	N 41	47.800	W 86	49.700
SW	N 41	42.400	W 87	00.200
WTHR Buoy	N41	45.308	W86	58.108
WH Crb	N41	39.465	W 87	7.366
WH 8	N41	40.667	W 87	4.751
WH 6	N41	41.661	W 87	2.428
WH 4	N41	42.617	W 87	0.019

Notes:

Marks 1-8 are at 0.8 NM radius from mark 0, the normal starting area.

Mark NE is 4.5 NM from mark 0 at 060 deg (this a new MCYC mark for 2021).

Mark SW is 5.0 NM from mark 0 at 240 deg (this is a new MCYC mark for 2021).

WTHR Buoy is the Perdue Research Weather Buoy approximately 2.6 NM West of mark 0.

WH marks are temporary mark location options for the Westward Ho race.

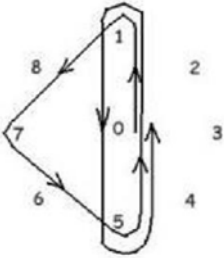
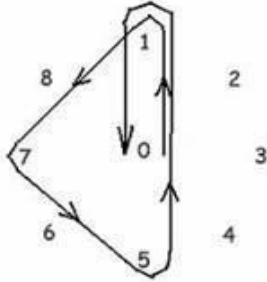
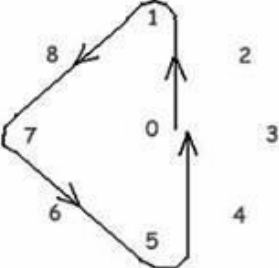
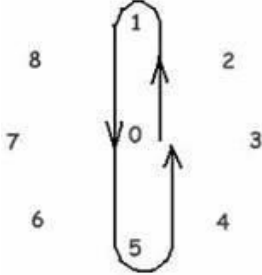
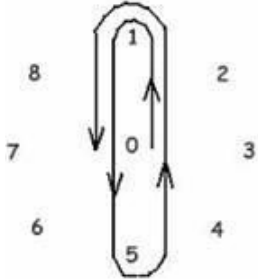
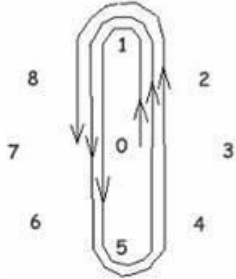
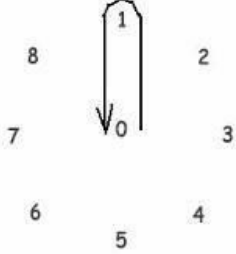
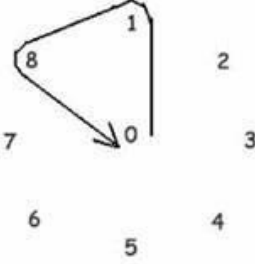
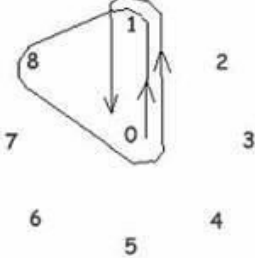
## COMPASS HEADINGS BETWEEN MARKS

To-> From	0	1	2	3	4	5	6	7	8	NE	SW	WTHR BUOY
0		360	45	90	135	180	225	270	315	60	240	276
1	180		113	135	158	180	202	225	247	68	233	
2	225	293		158	180	202	225	247	270	62	238	
3	270	315	338		202	225	247	270	293	58	244	
4	315	338	360	22		247	270	293	315	49	248	
5	360	360	22	45	67		293	315	338	52	248	
6	45	22	45	67	90	113		338	360	58	242	
7	90	45	67	90	113	135	158		22	64	234	
8	135	67	90	113	135	158	180	202		69	231	
NE	240	248	242	232	229	232	238	244	249		240	72
SW	60	53	58	64	68	68	62	54	51	60		32
WTHR BUOY	96									252	212	

## DISTANCES BETWEEN MARKS

To-> From	0	1	2	3	4	5	6	7	8	NE	SW	WTHR BUOY
0		0.8	0.8	0.8	0.8	0.8	0.8	0.8	0.8	4.5	5.0	2.6
1	0.8		0.6	1.1	1.5	1.6	1.5	1.2	0.6	4.1	5.5	
2	0.8	0.6		0.6	1.1	1.5	1.6	1.5	1.2	3.7	5.7	
3	0.8	1.2	0.6		0.6	1.1	1.5	1.6	1.5	3.9	5.6	
4	0.8	1.5	1.2	0.6		0.6	1.1	1.5	1.6	4.4	5.2	
5	0.8	1.6	1.5	1.2	0.6		0.6	1.1	1.5	5.0	4.5	
6	0.8	1.5	1.6	1.5	1.2	0.6		0.6	1.1	5.3	4.2	
7	0.8	1.2	1.5	1.6	1.5	1.2	0.6		0.6	5.2	4.3	
8	0.8	0.6	1.2	1.5	1.6	1.5	1.2	0.6		4.7	4.9	
NE	4.5	4.1	3.7	3.9	4.4	5.0	5.3	5.2	4.7		9.5	5.8
SW	5.0	5.5	5.7	5.6	5.2	4.5	4.2	4.3	4.9	9.5		3.3
WTHR BUOY	2.6									5.8	3.3	

**COURSE DESCRIPTIONS - 9 Marks course** Note (Port courses shown. Starboard courses are a mirror image of port courses)

	<p>Course: Port A Distance: 7.0 N miles</p>	<p>Course: Port B Distance: 5.4 N miles</p>	
	<p>Course: Port C Distance: 3.8 N miles</p>	<p>Course: Port D Distance: 3.2 N miles</p>	
	<p>Course: Port E Distance: 4.8 N miles</p>	<p>Course: Port F Distance: 8.0 N miles</p>	
	<p>Course: Port G Distance: 1.6 N miles</p>	<p>Course: Port H Distance: 2.2 N miles</p>	
	<p>Course: Port I Distance: 3.8 N miles</p>	<p>Course: Port J Distance: 2.7 N miles</p>	